

EasyHelp

Help Development System

Contents

Contents	3
Quick Start	4
More About EasyHelp	5
Installing EasyHelp	6
Details of the Installation Process	6
Important Legal Stuff	7
Using EasyHelp	8
Preparing to Use EasyHelp	8

Shortcut Keys	8
Topics	9
Links	9
Graphics	10
Configuring EasyHelp	11
Processing your document	13
Building you help file	13
Deleting Mark-up	13
Frequently Asked Questions	14
Known Bugs and Limitations	16
Planned Enhancements	17
Tips	18
Terms for the Novice	19
General Information	20

Contents

EasyHelp is an easy to use system that simplifies in the creation of Microsoft Help files from Microsoft Word documents. EasyHelp is ideal for user manuals and procedures, because the same document can be used to produce both the printed copy **and** the help file.

With EasyHelp non technical authors can now produce sophisticated hypertext systems without an in depth knowledge of the Microsoft Help Compiler.

Main Parts to this Manual

[Quick Start](#)

[More about EasyHelp](#)

[Installing EasyHelp](#)

[Using EasyHelp](#)

[Configuring EasyHelp](#)

[Frequently Asked Questions](#)

[Known Bugs and Limitations](#)

[Planned Enhancements](#)

[Tips](#)

[Support for EasyHelp](#)

[Version Information](#)

[Terms for the novice](#)

[Important Legal Stuff](#)

Quick Start

If you are an experienced computer user you may want to get going quickly. If this is the case, at least read this page!

Installing EasyHelp

- 1 Run **a:setup** to install EasyHelp.
- 2 Run the tutorial document from the EasyHelp Program Manager group

Preparing to use EasyHelp

- 1 Load Microsoft Word.
- 2 Create a new document based on the EASYHELP template.
or Load an existing document and then attach the EASYHELP template to it.
- 3 Quickly check that EasyHelp is configured correctly by clicking on the configure icon on the Word toolbar. (Or select Tools | © Configure EasyHelp from the menu)

Using EasyHelp

- 1 Create some **topics** by positioning the cursor on the heading of each topic and clicking the topic icon on the Word toolbar (Or select Insert | © EasyHelp Topic from the menu)
- 2 Create some **links** (to the topic that you have defined) by highlighting the text that is to be used as the link and clicking the link icon on the Word toolbar (Or select Insert | © EasyHelp Link from the menu)
- 3 Your document is now 'marked up'. You must now **process** this 'mark-up' by clicking the process icon on the Word toolbar (Or select Tools | © Process Markup from the menu)
- 4 Finally **build** your help file by clicking on the build icon on the Word toolbar (or select Tools | © Build Help from the menu)

That's it! You have now created a Microsoft Help file by following four simple steps:

- T** 1. Create Topics (T)
- L** 2. Create Links (L)
- P** 3. Process the 'mark-up' (P)
- B** 4. Build the Help file (B)

More About EasyHelp

EasyHelp is a set of macros contained in a template called [EASYHELP.DOT](#). These easy to use macros can be executed either from the toolbar or shortcut keys, and enable you to *mark-up* a document with topics and hypertext links and graphics. Other macros enable you to process the *marked-up* document, then build and view the resultant help file directly from within Word.

Apart from the ease of use, EasyHelp allows you to maintain one document that can be printed out as a hard copy manual or can be viewed as a help file. No complicated footnotes or extra page breaks clutter the document. In fact the only formatting changes made to the document are coloured text, to let you see where the topics and hypertext links are!

Since the marked up documents are saved as RTF format, any file that you process with EasyHelp can be used together to produce a [large help publication](#). Although this can be done manually, by a constructing a help project file, [EasyHelp Professional](#) has been designed to simplify this task.

Other help authoring systems do exist, and some of them are very good. However, EasyHelp was designed for **ease of use** rather than wide functionality. The rationale behind EasyHelp was to allow topics, links and graphics to be marked as easily as possible, and to be able to produce a help file without any prior knowledge of the Help Compiler.

EasyHelp can be tailored to meet specific needs. Contact the author for more details.

Installing EasyHelp

Installing EasyHelp is easy, simply follow the steps listed below:

- 1** Put the EasyHelp installation disk in Drive A:
- 2** Please start Microsoft Windows if it is not already running.
- 3** Run the setup program from Program Manager as follows:
 - In Program Manager, choose Run from the File menu. Windows displays the Run dialog box.
 - Type **a:setup** in the Command Line box.
 - Choose the OK button.
 - Follow the setup instructions on the screen.
- 4** After installing the EasyHelp files, the Setup program creates a EasyHelp program group containing icons for the tutorial document, the readme file and the on-line help.
- 5** Follow the tutorial by double clicking on the tutorial icon in the EasyHelp program manager group.

Read the section entitled [Details of the Installation Process](#) if you wish to know more about the installation process.

Details of the Installation Process

If you are reading this on-line (as a help file) the chances are that you have already installed EasyHelp on your system. Even so it is useful to know what the installation process did. This will improve your understanding of the EasyHelp system and will be helpful if the installation failed for some reason.

- The default location for the EasyHelp system files is C:\EASYHELP. If you wish, you can change this default to any directory of your choice. The directory will be created for you and is referred to as the *EasyHelp* directory.

The following files are added to the *EasyHelp* directory:

EasyHelp.hlp	Help file for EasyHelp.
readme.txt	Latest information for EasyHelp.
bullet.bmp	A bitmap of a bullet.
adjust.exe	Program to adjust the user settings file. This is run when the install document is loaded.

- Below the *EasyHelp* directory other sub directories are created:

1 *EasyHelp*\EXAMPLES containing the EasyHelp tutorial document and related files:

tutorial.doc	Tutorial document.
(tutorial.ini)	Mark-up details file
(tutorial.hpj)	Help project file
(tutorial.rtf)	Processed document
(tutorial.err)	Results of the build
(tutorial.hlp)	Built help file

The files in brackets are created by EasyHelp.

2 *EasyHelp*\ANSWERS containing the completed tutorial document and build help file.

3 *EasyHelp*\WORD containing a backup copy of **EasyHelp.dot** the Microsoft Word template file.

4 *EasyHelp*\HC containing a files to run the help compiler. Put your purchased copy of the help compiler here.

see [Important Legal Stuff](#)

- EasyHelp will create a Program Manager Group (called **EasyHelp.grp** by default) at installation time. This group simply gives access to the EasyHelp help file, the EasyHelp tutorial document and the readme file.

- EasyHelp will install its own INI file (user settings file) called **EasyHelp.ini** in your Windows directory. Whist you can change this file with any editor, you are advised to make changes via the configuration dialogs in the EasyHelp template.

- The EasyHelp macros are all contained in the file called [EasyHelp.dot](#). This file should be placed in the Microsoft Word template directory. The installation process will attempt to do this for you, but if this did not happen, copy the file from the *EasyHelp*\WORD sub directory to

your template directory using File Manager.

Important Legal Stuff

For legal reasons the Microsoft Help Compiler cannot be supplied with EasyHelp. You are expected to purchase a copy of this yourself.

Note: The Help Compiler is normally included with language products such as Visual Basic and C compilers from Borland and Microsoft. So check your hard disk - you may already have the required files.

Note: Please use version 3.10.505 (extended) or later of the Help Compiler. Upgrades to the latest version are readily available from the Microsoft forum on CompuServe.

Using EasyHelp

The best way to get started with EasyHelp is to go through the tutorial document. If you have not already done this please take some time out to do so.

You can [activate](#) EasyHelp in two ways:

- 1 Create a new document based on the EasyHelp template.
- 2 Attach the EasyHelp template to an existing document.

If you are not sure how to either of the above please refer to your Microsoft Word documentation.

When EasyHelp active, the toolbar will change. You will see the icons (below) at the right hand side of the toolbar: Click on these to find out what they are for.



Besides being able to use the toolbar, there are two other ways to use EasyHelp:

- 1 Use the menu. You will see that EasyHelp has added some menu items. It is easy to see which are the EasyHelp items: they all have a © symbol to the left.
- 2 Use the [shortcut keys](#). All the EasyHelp shortcut keys begin with '**Ctrl+Shift**'

Preparing to Use EasyHelp

In order to use EasyHelp on new or existing document you will need to attach the EasyHelp template (called EasyHelp.dot) to your document. For new documents you will be prompted for the name of the template to use - simply choose EASYHELP from the list. For existing documents you will need to attach the EasyHelp template to your document (use the File | Template... menu option).

Shortcut Keys

<u>Ctrl+Shift+T</u>	Create or edit a topic
<u>Ctrl+Shift+L</u>	Create or edit a link
<u>Ctrl+Shift+G</u>	Create or edit a graphic
<u>Ctrl+Shift+C</u>	Configure EasyHelp
<u>Ctrl+Shift+P</u>	Process document mark-up
<u>Ctrl+Shift+B</u>	Build help file
<u>Ctrl+Shift+D</u>	Delete EasyHelp mark-up
Ctrl+Shift+H	View the on-line help for EasyHelp
Ctrl+Shift+V	View built help
Ctrl+Shift+E	View build errors
<u>Ctrl+Shift+A</u>	Restore text to normal (black) colour

Topics

A topic is a chunk of information that is displayed on the screen when viewed by Microsoft Help. If the chunk of information is larger than the screen, scroll bars will appear. The end of a topic is marked by the beginning of the next topic or the end of the document.

With the topic function you can mark a new topic or edit an existing one. If your text cursor is on an existing topic you will be able to edit the topic.

One more thing to remember about a topic is that there are two types:

1. A *jump* topic. This will be marked in a green colour in your document. A jump topic is the most common and can be thought of as a jump to another position in the help file.
2. A *popup* topic. This will be marked in a blue colour in your document. A popup topic is normally used to display a smaller amount of information, and is frequently used for definitions and glossary type items.

Links

A link is a branch to a topic. It is normally a word or phrase in your document.

With the link function you can mark a new link or edit an existing one. If you have marked the text of an existing link you will be able to edit the link.

Like topics, there are two types of link:

1. A ***jump*** link. This will be marked in a green colour in your document. A jump link is the most common and can be thought of as a jumping to another position in the help file.
When viewed by Microsoft Help a jump link will be underlined with a continuous line.
2. A ***popup*** link. This will be marked in a blue colour in your document.
When viewed by Microsoft Help a popup link will be underlined with a dotted line.

Graphics




This is a picture of me. This graphic was inserted as a picture using normal Word facilities. It will show up the same in the built help file. It can be marked as a popup or jump link using the link function of EasyHelp. When inserting a picture in a word document, it is better to insert it as a linked file.

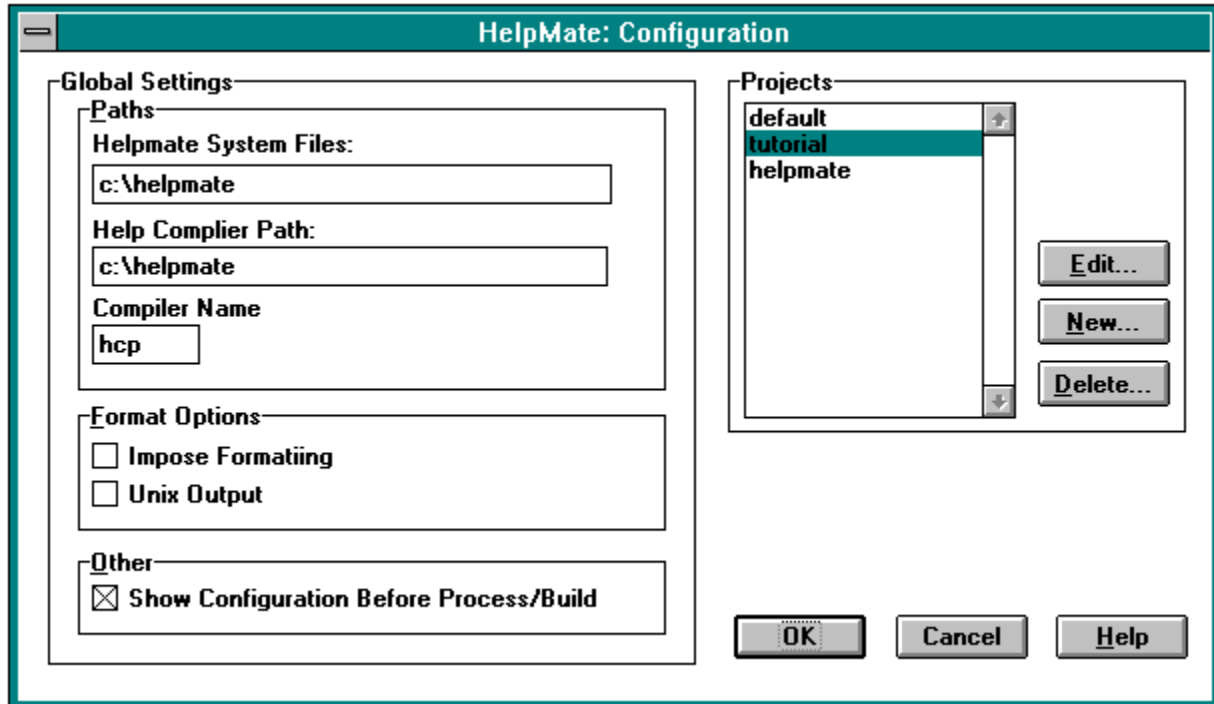
A picture can also be inserted using the 'G' icon on the toolbar. If wish to change the graphic, highlight the [] markers and click on the 'G' icon. The advantage of this method of including graphics is that special graphics files, called '[segmented hyper graphics](#)' (.shg files), can be included in this way.

The next release of EasyHelp will allow you to use normal bitmaps in the document, and will automatically search for corresponding .shg files and use them in the help file. This will enable the printed document with graphics to look exactly as the help file. (neat!)

Configuring EasyHelp

EasyHelp can be configured from within Word. To bring up the main configuration dialog click on the  icon on the toolbar.

Main Configuration Screen



Click on this picture to find out what each item does.

Global Settings

The **paths** section give the location of the EasyHelp system files and the Help Compiler. The name of the help compiler is specified here.

The **format options** allow you to enforce a standard style to the topic headings. If you wish to control the format of the headings to topics, uncheck this option.

The **other** options allow you to always show the configuration dialog before processing the document or building the help file. You will probably want to uncheck this option as you become more experienced with using EasyHelp.

Projects

The project options allow you to work on different projects and have unique settings for each project. Two projects exist when you first install EasyHelp, *default* and *tutorial*.

Tip: The *default* project settings are used as the basis of any new projects that you create. Change the default settings to suit your needs.

Project Name

Give a name to your project. A name must be eight characters or less. Your help file will have this name.

Help Title

The title of your help file.

First Help Topic

The name of the help topic to be used as the contents page of your help file.

Mark-up Details File

As you build more sophisticated help files this file is used to specify a more details about your help topics. For example a long description of your help topics and keywords that can be used to search for those topics.

Help Output Path

This is where your built help file will be put

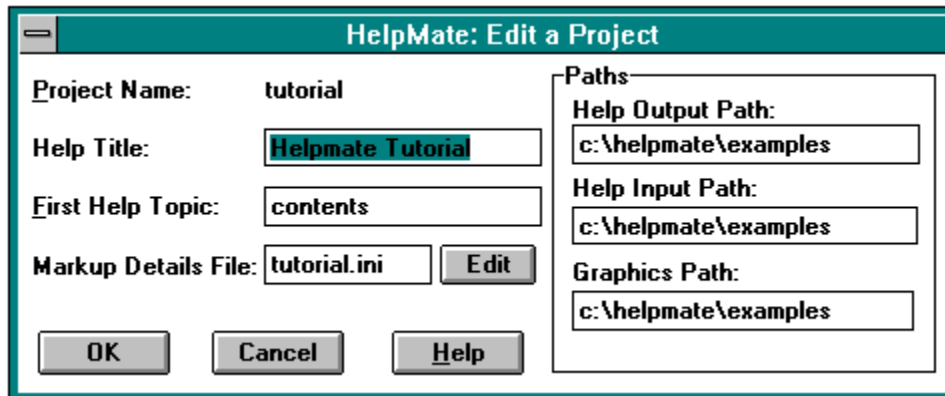
Help Input Path

This is where your *Mark-up Details File* resides and your processed documents.

Graphics Path

This is where any graphics files that are used by your help files reside.

Editing a project

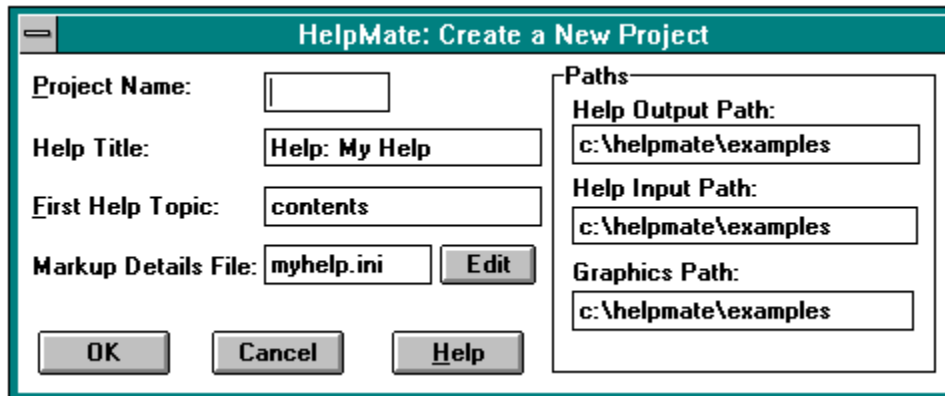


The screenshot shows a dialog box titled "HelpMate: Edit a Project". It contains several input fields and buttons. The "Project Name" field is set to "tutorial". The "Help Title" field is set to "Helpmate Tutorial" and is highlighted with a red box. The "First Help Topic" field is set to "contents". The "Markup Details File" field is set to "tutorial.ini" and has an "Edit" button next to it. The "Paths" section contains three fields: "Help Output Path", "Help Input Path", and "Graphics Path", all set to "c:\helpmate\examples". At the bottom, there are three buttons: "OK", "Cancel", and "Help".

Project Name:	tutorial	
Help Title:	Helpmate Tutorial	
First Help Topic:	contents	
Markup Details File:	tutorial.ini	<input type="button" value="Edit"/>
Paths		
Help Output Path:	c:\helpmate\examples	
Help Input Path:	c:\helpmate\examples	
Graphics Path:	c:\helpmate\examples	
<input type="button" value="OK"/> <input type="button" value="Cancel"/> <input type="button" value="Help"/>		

Click on parts of this diagram.

Creating a new project



The screenshot shows a dialog box titled "HelpMate: Create a New Project". It contains several input fields and buttons. The "Project Name" field is empty. The "Help Title" field contains "Help: My Help". The "First Help Topic" field contains "contents". The "Markup Details File" field contains "myhelp.ini" and has an "Edit" button next to it. The "Paths" section contains three fields: "Help Output Path" with "c:\helpmate\examples", "Help Input Path" with "c:\helpmate\examples", and "Graphics Path" with "c:\helpmate\examples". At the bottom, there are "OK", "Cancel", and "Help" buttons.

Project Name:	<input type="text"/>
Help Title:	<input type="text" value="Help: My Help"/>
First Help Topic:	<input type="text" value="contents"/>
Markup Details File:	<input type="text" value="myhelp.ini"/> <input type="button" value="Edit"/>
Paths	
Help Output Path:	<input type="text" value="c:\helpmate\examples"/>
Help Input Path:	<input type="text" value="c:\helpmate\examples"/>
Graphics Path:	<input type="text" value="c:\helpmate\examples"/>

Click on parts of this diagram.

Deleting a Project

Self explanatory. I hope?

Processing your document

When your document is processed it is converted to an RTF file suitable for input into the help compiler.

Building you help file

The build option will open a window to run the help compiler. Do not worry if there are errors displayed on the screen - these can be viewed at any time by pressing '**Ctrl+Shift+E**' or selecting from the help menu.

Deleting Mark-up

Mark-up can be deleted in a paragraph by positioning the text cursor anywhere in the paragraph and using the shortcut keys '**Ctrl+Shift+D**', or by selecting '**© Delete EasyHelp Markup**' from the Edit menu.

Graphic mark-up can be deleted by simply deleting the [] markers.

Frequently Asked Questions

What to do if things are not working as expected?

Why are my paragraphs aligned unevenly?

There must be more to it.

How do you build a help file from multiple documents?

What to do if things are not working as expected?

First check the EasyHelp files are in the places you expect them to be in. Then check the configuration dialog points to the correct locations. Go back and load the tutorial document and see if this can be processed and built as a help file.

Read through the on-line help file for EasyHelp to see if you can spot any problem areas.

Try reinstalling EasyHelp from the install disk.

Remember that computer programs are only human and contact [me](#). I will do my best to get you working again.

Uneven paragraphs

Normally hanging indents are prone to this. The reason is because the default tab stops have been used. Make sure you mark actual tabs on your ruler.

There must be more to it!

Well there is ... but not much more. Topics and links are the main concepts that you need to grasp. You will notice that any document can be marked up as a hypertext file whilst leaving the document in its original form (except for colour changes!). This is exactly what EasyHelp was designed for: to save trees, by enabling manuals, procedure documents, in fact anything, to be produced in hypertext form.

The best way to learn more about EasyHelp is to work with it for a while. It will eventually become a normal part of your document processing process.

EasyHelp allows you to convert any Word document into a form that can be viewed as on-line help in Microsoft Windows. The way you do this is to 'mark-up' your document with topics and links.

Making a help file from multiple documents

- Mark-up your documents. Check the formatting.
- Spend some time adding proper descriptions and key words to your mark-up details file. *This can be done before you mark up your documents, if you know what how your are going to name your topics.*
- Then process all your documents.
- Then use the help project created by the build process as a guide and add in the file names of all your processed documents. The following is an extract from the tutorial project file (tutorial.hpj):

```
[OPTIONS]
root=c:\EasyHelp\examples
bmroot=c:\EasyHelp\examples
errorlog=c:\EasyHelp\examples\tutorial.err
title=EasyHelp Tutorial
contents=contents

[FILES]
tutorial.rtf

List your files here

One after the other

[WINDOWS]
main="EasyHelp Tutorial", (46,53,922,913 ),, (255,255,246), (255,255,192)

[CONFIG]
BrowseButtons()
```

- Then simply execute the help compiler from a DOS window with the help project name as a parameter. As in: **HCP *project_name***.

Known Bugs and Limitations

Not so much bugs, but features that are known to work incorrectly. Most of these will be fixed in the next release.

- **Symbols do not show up in the help file.**

Unfortunately this is a problem with the RTF format that Word generates. Little can be done about this, apart from using bitmaps for the symbols. Bullets, however, are automatically converted to bitmaps when you process your file.

- **The configuration dialogs allow invalid data.**

Unfortunately Word only provides rudimentary features for dialogs. Extensive validation of fields is difficult to say the least. I hope you can live with this one for a while. Validation will certainly be improved with version 3.0. Long-term, the dialogs will be a proper Windows style dialogs (written in a compiled language)

- **EasyHelp does not work with my version of Word.**

Versions of Word before 2.0c do not work. Contact Microsoft for your free upgrade.

EasyHelp has not been tested fully using Word 6; EasyHelp menu items and toolbar icons do not show up. Please contact the [author](#) if you require a version for Word 6

EasyHelp version 3.0 will work with Word 6.

- **I would like to see my graphics on the screen in Word and in my printed document.**

You **can** do this by inserting a picture. It is better to use linked graphics as these will be supported fully in version 3.0 of EasyHelp. However if you wish to use [pictures with hotspots](#) you will need to use the insert graphic function provided by EasyHelp until version 3.0 is released.

Planned Enhancements

If you like EasyHelp and find it useful please let me know. The following enhancements are planned, but will only be done if enough people show interest in using EasyHelp. Similarly if you have specific needs let me know - these can be built into future releases of EasyHelp

- Adding keywords and browse sequences at topic creation time.
- Support for browse sequences.
- Support for help macros
- Multiple help window support.
- Embedded picture objects automatically included in help file.
- Improved configuration dialog.
- More control over the formatted help file.

The next main release of EasyHelp will be version 3.0. Interim bug fix releases will be made to 2.0.

Tips

Large documents or publications

Quickly restoring the text colour to black

Large Documents or Publications

It is better to use smaller documents and then merge them into a complete publication. This can easily be done by creating a MASTER document that includes the smaller documents. For example:

```
{include part1.doc}
{include part2.doc}
{include part3.doc}
```

The INCLUDE fields are special filed codes that instruct Word to insert into the document the item named in the code. See Chapter 11 or the Word manual for more details.

The following short macro will ensure that the master document is up to date. If you name this macro *AutoOpen* and save it with the template associated with the MASTER document, it will run automatically every time the MASTER document is opened.

```
Sub Main
    ViewFieldCodes 1
    StartOfDocument 0
    EditFind .Find = "include", .WholeWord = 0,\
        .MatchCase = 0,.Direction = 2, .Format = 0
    While EditFindFound() = - 1
        UpdateFields
        EditFind .Find = "include",.WholeWord = 0,\
            .MatchCase = 0,.Direction = 2,.Format = 0
    Wend
    StartOfDocument
    Super FileSave
    ViewFieldCodes 0
End Sub
```


Quickly restoring the text colour to normal

Mark the text, then press **Ctrl+Shift+A** or select the '**Normal Colour**' menu item on the '**Format**' menu.

Terms for the Novice

Program Manager	The front end program to Microsoft Windows.
Program Manager Group	A menu, comprising of a group of icons, which can run programs when the icons are double clicked.
Double Clicking	Clicking the mouse button (left normally) twice in quick succession.
Icon	Small graphic picture.

EasyHelp Template File

EasyHelp.dot is the Word template file. This should be put in the same place as all your other template files.

Help Project File

A file that lists the component files making up a help file and special formatting instructions. Refer to the documentation that came with your help compiler for more details.

Pictures with hotspots

These are called 'Segmented Hyper Graphic Files'. They can be created from bitmaps by using the *shed* editor included with the help compiler.

Popup Topics

Popup topics are marked with **blue** colour in your document. In a help file, they look like this. When clicked they appear as a small window; they disappear on the next mouse click.

Popup topics are normally used for smaller pieces of information such as definitions.

Jump Topic

A jump topic is like this. It stays on the screen until you jump somewhere else.

General Information

Support

EasyHelp was conceived and written by [James Holroyd](#) of Eon Solutions.

Please direct any queries, problems or suggestions to James Holroyd at Eon Solutions.

Email: eon@cix.compulink.co.uk

Tel: 0973 209667

Version Information

EasyHelp is version 2.31, Oct 1994

Requires version 2.0c of Word

Requires version 3.10.505 (extended) of the Microsoft Help Compiler

A version for 6.0a of Word is available

EasyHelp Professional

EasyHelp Professional is the extended version of EasyHelp. It simplifies the production of a Microsoft Help file from multiple documents. It is a standalone Windows application that allows greater control over the formatting of the help file.

James Holroyd



Eon Solutions
12 Juniper Rise
Upton Priory
Macclesfield
Cheshire
England
SK10 4XT

Email: eon@cix.compulink.co.uk
Tel: 0973 209667

Me Again



Well

If you do not know what these do, I suggest you attend a Windows course!

